

PWI Technical Meeting Flyer

Technical Meeting
1st December 2011
At 4.30pm



Sydney Masonic Centre
66 Goulburn Street,
Sydney

" 3D Laser Scanning Technology"

Sponsored by:

SINCLAIR KNIGHT MERZ

SKM

Leigh Finlay, NSW Spatial Manager SKM

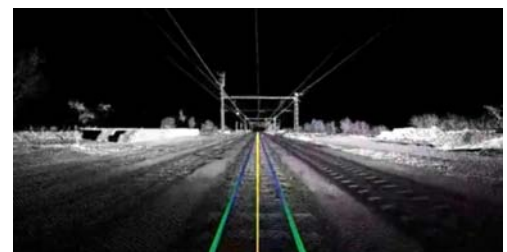
The development of high definition 3D laser scanning has revolutionised the surveying profession with the means to capture data more rapidly, accurately and safely than ever before. State of the art 3D laser scanners are increasingly being used to capture data on large or complicated sites and structures in a multitude of different environments. Laser scanning offers a safe and cost effective solution to engineering and design challenges on everything from major roads with high traffic volumes, historic buildings undergoing renovation, or a complex area in a plant slated for new design.



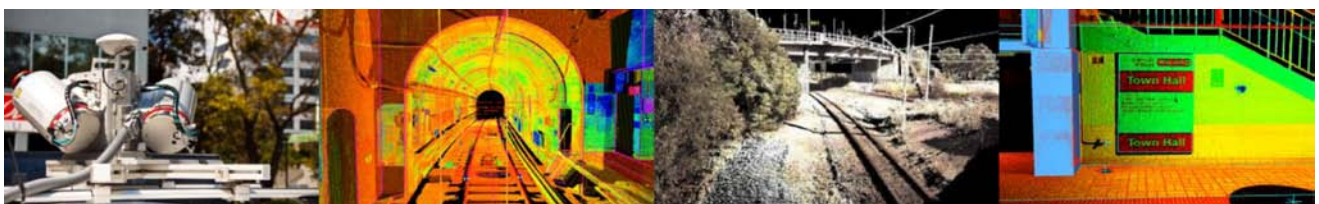
SKM is a market leader in the delivery of 3D Laser Scanning Technology to its clients. Whether it is a static or a mobile application, SKM has the resources and capability to meet most surveying needs.



Leigh Finlay will deliver a comprehensive presentation on 3D laser scanning at the December PWI Technical Meeting. Leigh will showcase some of the latest 3D laser scanning innovations and demonstrate how this innovative technology can bring significant benefits in safety, cost and time savings to rail infrastructure projects.



Making Survey Work Safer, Smarter and Faster



The meeting will conclude at 6.00pm
Please join us for networking drinks and finger food following the meeting